

ITS MIDWEST & GCM *Express Lanes*

ITS MIDWEST
The Intelligent Transportation Society of the Midwest
A regional chapter of ITS America including the states of
Illinois, Indiana, Wisconsin



September 2001 Volume 6.3

ITS Forum 2001 – Looking Ahead

On September 26th, the Midwest ITS community will learn about future expectations for Intelligent Transportation Systems (ITS) and how transportation, maintenance, public safety, elected officials, and special event planners will be using ITS to meet today's and tomorrow's needs and challenges.



The Wisconsin Section of ITE, in conjunction with Marquette University, the Wisconsin Department of Transportation, FHWA, and ITS Midwest is co-sponsoring the 7th Annual Regional Intelligent Transportation Systems Forum - "Looking Ahead". The event will be held on Wednesday, September 26th at Marquette University in Milwaukee. Program sessions will address challenges associated with planning,

deploying, operating, and maintaining ITS at regional and national levels. The keynote address topic will be the Transportation Equity Act for the 21st Century (TEA-21) Reauthorization. ○

For further details contact the Event Chair Marc Hustad, (414) 359-2300, Mhustad@hntb.com. Information (including online registration) is also available on the web at www.itsforum.org.

ITS Midwest to Host World Congress Reception

"ITS leaders from around the world will be treated to night views of Chicago's famous skyline and be able to wander the museum to sample a taste of Chicago food and drinks."

As part of festivities for the 2002 ITS World Congress, ITS Midwest will offer congress attendees "an evening of food, drink, and stargazing" which is sure to make their visit to Chicago memorable. The ITS Midwest hosted reception will be from 6:30 pm to 9:30 pm on Sunday, October 13, 2002 at the historic Adler Planetarium and Astronomy Museum on the Lakefront.

ITS leaders from around the world will be treated to night views of Chicago's famous skyline and be able to wander the museum to sample a taste of Chicago food and

drinks. The entire museum will be open for the private viewing, including use of the main telescope and drinks in the Zeiss star projector room. Attendees can also take a virtual voyage of discovery under the dome of the world's first virtual-reality space environment — the StarRider™ interactive 3-D theater.



The Planetarium is a short walk from the downtown through the park and museum campus. Shuttles will be available to transport guests from the hotels. The reception is open to all congress attendees for a small additional charge. ○

EXPRESS LANES is the official newsletter of ITS Midwest and the GCM Priority Corridor. Your comments, suggestions and contributions are welcome.

ITS Midwest Executive Board:

PRESIDENT:
Jeff Hochmuth, Iteris
VICE PRESIDENTS:
Phil DeCaboater, Wisconsin DOT
David Zavattero, Illinois DOT
Mark Newland, Indiana DOT
TREASURER:
Joe Ligas, Transportation Consulting
SECRETARY:
Gary Rylander, Edwards & Kelcey

GCM Executive Committee:

CHAIR:
Terry Mulcahy, Wisconsin DOT
Kirk Brown, Illinois DOT
J. Bryan Nicol, Indiana DOT

Newsletter:

EDITOR-IN-CHIEF:
Tom Ewing, Argonne National Lab

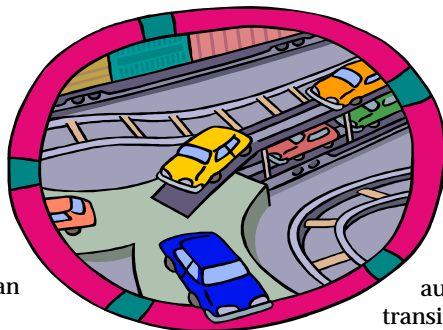
Inside this issue

- 2 **UITC STUDY**
- 2 **AIR QUALITY ASSESSMENT**
- 3 **CALENDAR**
- 3 **MEMBER NEWS**
- 4 **MEMBERSHIP**

UIC Initiates Vehicle Highway Automation Systems Study

The University of Illinois at Chicago has played an active role in intelligent transportation systems research and design, beginning with ADVANCE, a vehicle navigation project led by the Illinois Department of Transportation, and continuing with ongoing initiatives to provide systems engineering support for the development of Traffic Management Centers in Northeastern Illinois.

Professor Farid Amirouche of the UIC Engineering Office of Transportation Research has begun a joint effort with the University of California at Berkeley to perform an analysis and estimate system benefits for two projects dealing with vehicle highway automa-



tion systems in the Chicago area. Working with the Chicago Area Transportation Study, Amirouche is leading an effort to develop assessments of the potential for an automated bus rapid transit circulator system for the central area of the City of Chicago and also for an automated

intermodal freight interchange system connecting the multimodal rail freight hubs located in the City of Chicago and its suburbs.

The transit circulator project addresses the need to improve the performance of transit distribution in the loop and adjacent high volume activity centers. The freight interchange project deals with improving the reliability of truck freight connections between intermodal facilities scattered throughout the area. Both of these projects have been considered in the past as possible solutions to some of the area's critical transportation deficiencies and will build on past feasibility and design efforts completed as part of the region's transportation planning process.

UIC will focus on the potential of applying vehicle highway automation technology as part of an implementa-

See UIC Study page 3

Air Quality Assessment of ITS Technology on the Borman

Purdue University has been working with the Indiana Department of Transportation on an array of Intelligent Transportation Systems initiatives, ranging from analyzing the impacts of virtual weigh stations on enforcement to examining the potential of using probe vehicle information as a source of travel information in midsize cities. One of the more intriguing research efforts involves a study of the impact of the Borman Traffic Management System on air quality adjacent to the Expressway.

In particular, Purdue is examining the changes in levels of two common air pollutants related to vehicle emissions resulting from deployment of the Borman Expressway Traffic Management System, carbon monoxide (CO) and small particulates (PM 2.5). Professor Bob Jacko's research team began collecting baseline weather and air quality data at a site adjacent to the Borman Expressway between Cline and Kennedy Avenues beginning October 1999 – prior to the construction of the traffic management system. The data includes measurements of carbon

monoxide, small particulates, wind speed, wind direction, temperature, and rainfall. The data is being collected and recorded at ten second intervals.

The extensive database of measurements will insure that the research team has a full range of before and after data which can be used in the analysis. Preliminary results are now being developed for the baseline condition and for changes occurring during this year's construction activities along the Borman Expressway. The data collection will continue

until full deployment of the Borman traffic management system is completed. It is anticipated that, as a result of this data, it will be possible to develop reliable estimates of the impacts of an array of traffic management activities on air quality.

This research represents a follow-on study to previous work conducted by Dr. Jacko to measure the changes in hydrocarbons caused by congestion at a ramp site on the Borman. ○

For further information, please contact: Dr. Bob Jacko, jacko@ecn.purdue.edu.

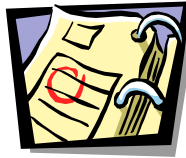


UIC Study*Continued from page 2*

tion strategy. The study will include concept definition, roadway and vehicle requirements, preliminary design, operations, and costs. It will also include an initial benefit/cost analysis to assess the potential for deployment.

Guidance will be provided by a Stakeholder Advisory Committee made up of all key regional and state transportation interests which will be impacted by these potential projects. The technical assessment will employ the latest analysis and estimation tools developed by the University of California. ○

For further information, contact: Prof. Farid Amirouche, amirouch@uic.edu.



Calendar of Events

Upper Great Lakes ITS America Chapters Executive Summit, September 25, Marquette University, Milwaukee, WI. Contact: Jeff Hochmuth, 630-926-1487, jjh@iteris.com.

ITS Forum 2001, sponsored by ITE Wisconsin and ITS Midwest, Sept. 26, 2001, Marquette University, Milwaukee, WI. Contact: Marc Hustad, 414-359-2300, www.itsforum.org.

8th World Congress on ITS, September 30 through October 4, 2001, Sydney, Australia. Contact: Kip Stacy-Protts, 202-484-4542, kstacy@itsa.org, www.itsa.org/worldcongress.

9th World Congress on ITS, October 14 – 18, 2002, McCormick Place, Chicago. For info: www.itsa.org/worldcongress.

NEWS and ANNOUNCEMENTS



GCM EXECUTIVE COMMITTEE

On July 12, 2001 the GCM Executive Committee met at the 2001 Mississippi Valley Transportation Conference in Chicago, Illinois. Members present included Terry Mulcahy, WisDOT Secretary; Dick Smith, representing Kirk Brown, IDOT Secretary; Norm Stoner, FHWA; Mark Newland, representing Cristine Klika, INDOT Commissioner; the Coordination Work Group and others. The meeting focused on the development of the Corridor Program Plan (CPP) Update. The Executive Committee indicated their support for the plan and approved the plan unanimously.

The group discussed GCM Funding Activities that included a united corridor pursuit of Federal ITS Funds, philosophy of cost sharing, affirmation and continuation of State DOT funding support, and continued aggressive pursuit of partnerships. A GCM 15-month action plan was also established, including:

- Completion of the Regional Architecture
- Review of the Coalition Understanding
- Assessing the potential for broadening influence of the program to include Minneapolis, Detroit, Indianapolis and St. Louis
- Holding a Congressional Delegation Tour

- Providing input to AASHTO on the TEA-21 Reauthorization

The next Executive Committee meeting is tentatively set for the fall. ○

I-95/GCM INCIDENT MANAGEMENT ROUNDTABLE

The I-95 Coalition and the GCM Incident Management Work Group met on August 22 and 23, 2001 in Chicago, Illinois, to discuss incident management efforts in the I-95 and GCM Corridors. Participants included I-95 Coalition incident management experts from New York, New Jersey, Virginia and Connecticut, along with key members of the GCM Incident Management Work Group.

As part of the meeting, the I-95 Coalition toured several IDOT offices (the Gateway Traveler Information System in Schaumburg, IDOT's District 1 Communications Center, the IDOT Traffic Systems Center in Oak Park) and concluded its tour with a presentation on GCM Corridor Incident Management programs at the IDOT Emergency Traffic Patrol Facility,



including a visual display of incident management response equipment from each of the three states.

The roundtable discussion focused on "hot" incident management related topics, including interagency communication systems, quick-clearance policies/legislation, liability associated with providing incident management across state borders, training, video sharing, and alternate route diversions. The meetings were very beneficial to both programs and will be followed by quarterly conference calls and another incident management roundtable discussion in September of 2002 in the I-95 Corridor. ○

GREAT LAKES ITS EXECUTIVE SUMMIT

The Upper Great Lakes ITS America Chapters Executive Summit is scheduled for Tuesday, September 25 at Marquette University. Hosted by ITS Midwest, the executive summit will have representatives from ITS Midwest, ITS Minnesota, ITS Michigan, and the Wisconsin ITS Alliance. The goals of the summit are to identify common interests and issues and to establish partnerships to address them. Another key objective is to establish relationships that lead to more regional multi-chapter interactions.

The participating organizations have expressed a desire to work together in areas of common interest. This summit could serve as a useful model for interactions between ITS Midwest and other organizations. ○

Membership

Membership in ITS Midwest is open to corporations, companies, government agencies, universities, and other organizations with an interest in ITS development and deployment. Members of ITS America are entitled to up to three free chapter memberships, based on their ITS America dues.

Members paying \$15,000 in dues to ITS America get three chapter memberships, those paying \$5,000 to \$10,000 get two memberships, and those paying between \$500 and \$3,000 receive one membership. A qualifying organization which is not a member of ITS America may join the ITS Midwest chapter for \$245. Organizations belonging to ITS America which have used up their complimentary chapter memberships may also join for \$245.

Chapters like ITS Midwest play a key role of outreach, education, and support for ITS technical and planning activities. ITS Midwest also provides a forum for planning and support of the GCM Priority Corridor. **Join ITS Midwest today and play a role in shaping our future transportation systems!**

ITS Midwest Members:

3M
Alpine Electronics

Argonne National Laboratory
Amtrak National Railroad Corp.
Barco America - Visual Systems
BRW Inc.
Chicago Area Transportation Study
Chicago DOT
City of Madison, WI
County of Lake, IL
Computer Sciences Corp.
CORNET Technology Inc.
DuPage Mayors and Managers Conf.
Eaton Corp.
ECM Inc.
Edwards & Kelcey
Etak Inc.
FLI Communications Corp.
Ford Motor Co.
General Motors
Great Lakes Engineering
Hartman Group, Inc.
HNTB Corp.
Hudson Institute Inc.
Illinois DOT
Illinois State Toll Highway Authority
Indiana DOT
Intelect Network Technologies
Iteris Inc.
KG Rear Vision
Landstar Systems Inc.
Ligas Consulting
Marquette University
Miami Valley Reg. Planning Commission
Motorola Inc.
National Engineering Technology Corp.
Navistar International Transportation Co.

NE Indiana Regional Coord. Council
Northern Telecom
Ohio State University
Oklahoma DOT
PACE Suburban Bus
Parsons Transportation Group, Inc.
PB Farradyne Inc.
Positronic Industries
Purdue University
Regional Transportation Authority
Robert Bosch Corp.
Schneider National
Scientech Inc.
Siemens North America
Steelye, Stevenson, Value & Knecht
The Hoosier Company Inc.
Traffic & Parking Control Co.
Traffic Control Corp.
TransCore
Transintel Corp.
TranSmart Technologies Inc.
TRW Inc.
University of Illinois at Chicago
University of Illinois at Urbana-Champaign
University of Wisconsin at Madison
Weiland Consulting Co.
Wilbur Smith Associates
Wisconsin DOT
Ygomi LLC

For further information about joining and the benefits of membership in ITS Midwest, please contact Philip DeCabooter, membership chair, at (608) 267-0452. ○

ITS MIDWEST

The Intelligent Transportation Society of the Midwest
A regional chapter of ITS America including the states of
Illinois, Indiana, Wisconsin



How to reach us...

Please address all publication inquiries, comments, suggestions, and contributions to: *Express Lanes* Editor, ITS Midwest, c/o Argonne National Laboratory, 9700 S. Cass Avenue, ITS/208, Argonne, IL 60439. *Express Lanes* may also be reached at:

w Telephone: 630-252-1617
w FAX: 630-252-4500
w email: ITSnews@anl.gov

Express Lanes is the newsletter of the Intelligent Transportation Society of the Midwest and the GCM Corridor Coalition.

Contributions of general interest to our readers are encouraged, including news from members, upcoming events, articles on technology/research and

deployment projects, and other ITS-related information.

For further information on GCM corridor activities, contact your local DOT representative or the BRW consulting team.

GCM Corridor C-TIC Home Page:
<http://www.gcm.travelinfo.org>

Illinois DOT
David Zavattero 847/705-4800
Chuck Sikaras 847/705-4800

Indiana DOT
Mark Newland 317/232-5523

Wisconsin DOT
Phil DeCabooter 608/267-0452

URS/BRW
Jeff Benson 612/373-6444
Daryl Taavola 612/373-6529

ITS MIDWEST

c/o Argonne National Laboratory
9700 S. Cass Ave., B208
Argonne, IL 60439

Address Correction Requested